



WHO HAS THE **BEST** WEAPON

 **DA BOMB**

WEAPON CATALOG

Note: Not all products are available.



THE BEST WEAPONS AT DA BOMB

DA BOMB has been on the market for more than 20 years. We specialize in the **Heavy-Duty MTB** such as Downhill, Freeride, Dirt Jump, Slope Style, Enduro and All Mountain. Since we started our goal was to make top quality frames and components that are up to date with the latest technological developments and mountain biking trends.

The Da Bomb components are designed from people that are passionate riders. We listen and we feel the needs and the demands of riders worldwide and that makes Da Bomb strive to produce better products.

Da Bomb sponsors many mountain bike events and competitions throughout the world. We collect valuable experience and information through our interaction with racers and riders and we implement that continuous feedback evolving our products.

Now, get ready to have your heart blown away for DA BOMB weapons!



 **DA BOMB**

IMPACT STEM

MK26 PLUS

- A shortest and super light DH direct mount stem
- Designed for any application of dual crown forks
- Direct mount by 4 bolts type

DH	
MATERIAL	AL6061-T6 with CNC Machined
BARBONE	35mm
EXTENSION	25mm and 30mm
ANGLE	20°
WEIGHT	140g
COLOR	Black, Red



DIRECT MOUNT SPACER

- Direct Mount By 4 Bolts
- Thickness:5 mm
- Weight: 17.6g
- Color Available: Black

BULLET SHELL

- Shorten forged stem for increase strength and durable
- The extension 35mm to effectively increased agility and stability in steering

DH/FR/DJ	
MATERIAL	AL6061-T6 Forged with Polished
BARBONE	31.8mm
EXTENSION	35mm
ANGLE	0°
WEIGHT	149g
COLOR	Silver, Black, Red, Blue



IMPACT STEM

F35

- Fit For 35mm Handlebar design
- Extension 45mm through comes along with weight reduced smartness when directing your bike

AM/FR	
MATERIAL	AL6061-T6 with CNC Machined
BARBONE	35mm
EXTENSION	45mm
STEERER DIA	1-1/8"
WEIGHT	154g
COLOR	Black, Green



MP8

- Offset -17° to lower handle position.
- Drop-Bar designed exclusively for 650B and 29er AM/XC bikes

EFFECTIVE BAR CLAMP HEIGHT	9mm for ext. 60mm; 15mm for ext. 80mm
WEIGHT	148g/60mm; 170g/80mm
COLOR	Black, Green, Blue

AM/XC	
MATERIAL	AL6061-T6 with CNC Machined
BARBONE	Dual sizes available 31.8mm and 35mm
EXTENSION	60mm and 80mm
STEERER DIA	1-1/8"
ANGLE	-17°
STACK HEIGHT	32mm



KING

- Fits 1-1/8" steering tube
- 2 in 1 design in 31.8 or 35mm has great strength and more suitable for riders



AM/FR	
MATERIAL	AL6061-T6 with CNC Machined
BARBONE	Dual sizes available 31.8mm or 35mm
EXTENSION	50mm
WEIGHT	157g (shim included)
COLOR	Black, Blue, Green

SHARK

- Aluminum 3D forged, high strength and light weight
- Classical and trending bold shark artwork design

XC/AM/TRAIL	
MATERIAL	AL6061-T6 3D forged
BARBONE	31.8mm
EXTENSION	60mm/80mm
ANGLE	±7°
WEIGHT	108g(60mm) / 119g(80mm)
COLOR	Black



HANDLEBAR

STROKE HB(CARBON)

- Each Stroke HB has achieved MTB impact testing by manufacture
- 780mm width provides more stable handling for AM even Enduro

- The optimum combination of strength, weight and high quality
- Perfect geometry with 20mm rise, 9° backsweep & 5° upsweep has cozy riding for riders



DH	
MATERIAL	Full carbon fiber
RISE	20mm
BACKSWEEP	9°
UPSWEEP	5°
BARBORE	31.8mm
WIDTH	780mm
WEIGHT	259.5g
COLOR	UD matt black

DETONATOR 35

- 35mm barbore design keep strong and stiff for Downhill and Freeride riding
- 800mm wide bars with 8-degree backsweep good for aggressive trail riding



DH/FR	
MATERIAL	AL6061-T6 double butted
RISE	18mm
BACKSWEEP	8°
UPSWEEP	6°
BARBORE	35mm
WIDTH	800mm
WEIGHT	397g
COLOR	Green, Blue, Yellow, White

BAZOOKA 800

- What a badass weapon? The BAZOOKA is always the most wanted toy for boys back to high school and once you own it, then you are the boss.



AM/DH	
MATERIAL	AL6061-T6 double butted
RISE	12.7mm
BACKSWEEP	9°
UPSWEEP	5°
BARBORE	31.8mm
WIDTH	800mm
WEIGHT	402g
COLOR	Black, Neon Yellow

HANDLEBAR

ARTILLERY

- Low Gravity Design For 29ER or 27.5" Bikes
- Made by hydro-forming tube with lightweight 276g only, but structure bring it stiffness and strength



AM/XC	
MATERIAL	AL6061 hydro-forming tube
RISE	4.8mm
BACKSWEEP	9°
BARBORE	31.8mm
WIDTH	740mm
WEIGHT	276g
COLOR	Green, Black (Sand blasting with anodized colors)

APACHE 750



- Like the Apache in the air, this handle bar has unlimited power to attack the enemies.
- Adapting the 6061 T6 heat treated aluminum which gives it more power and strengths.

AM/FR	
MATERIAL	AL6061-T6 double butted
RISE	25.4mm
BACKSWEEP	8°
UPSWEEP	10°
BARBORE	31.8mm
WIDTH	750mm
WEIGHT	394g
COLOR	Black, White

TACTIC

- If you got the DJ or Street bike, TACTIC will be your best weapon and it will help you to conquer the battle. Due to the super high 3 inches bar rise, the TACTIC is good for SS, DJ & street. The width of 730mm is easier for riders to do trick which is a big benefit.



DJ/STREET	
MATERIAL	AL6061-T6 double butted
RISE	3"
BACKSWEEP	5°
UPSWEEP	9°
BARBORE	31.8mm
WIDTH	730mm
WEIGHT	393g
COLOR	Black, Gold

GRIP

PARTICLE

- New diamond knurl pattern improves grip and gives the superior comfort
- Da Bomb embossed logo
- Single clamp lock-on design and reinforced soft ends

MTB	
MATERIAL	Rubber compound slip-free pattern knobs
LENGTH	135mm
ID	22.5mm
WEIGHT	110g
COLOR	Black, Red, Neon Yellow



BONBONS LOCK-ON 2.0

- BONBONS LOCK-ON 2.0 with knobs provide better absorption and smooth
- Half-flange designed perfect for shift lever control and good for riders with large hands
- Alloy lock-on clamp and comfortable during MTB rides

MTB	
MATERIAL	Rubber compound slip-free pattern knobs
LENGTH	135mm
WEIGHT	113g
COLOR	Black with orange lock rings Red with black lock rings



BONBONS

- The professional design of Knobs which can absorb the impacts very well
- The BONBONS will be easy to conquer when you want to do tricks or some magic

DJ/BMX	
MATERIAL	Rubber compound
LENGTH	140mm
ID	22.2mm
WEIGHT	108g
COLOR	Black, Blue, Purple, Red



HOLY SHIT 2.0

- DaBomb Solid Skull pattern
- Alloy double-lock-clamp design
- Out layer soft Kraton rubber, inner plastic shell

MTB	
LENGTH	130mm
WEIGHT	100g
COLOR	Black



SEATPOST

THRUSTER

- 3D forged technology design
- It comes with 27.2,30.9 and 31.6mm to give you more options to select

XC-DH	
MATERIAL	AL6061-T6,3D forged
POST LENGTH	350mm
OFFSET	0mm
SIZE	27.2mm,30.9mm and 31.6mm
WEIGHT	284g
COLOR	Black



RIFLING

- 3D forged, lighter weight
- Low profile lightweight clamp, adjustable angle
- Special spiral pattern prevents from spinning and slipping. It also decreases the noise from the friction between the seat tube and seat post
- Including rubber ring that prevents mud and dust get into seat tube

XC	
MATERIAL	AL6061-T6,3D forged
POST LENGTH	370mm
OFFSET	0mm
SIZE	30.9mm and 31.6mm
WEIGHT	246g (31.6mm)
COLOR	Black



TORPEDOES

- 3D forged technology design to make the post and top clamp in one-piece makes the structure stronger
- One bolt adjustment design easy to mount saddle position & angle in one-time

XC-ENDURO	
MATERIAL	AL6061-T6,3D forged
POST LENGTH	400mm
OFFSET	10mm
SIZE	30.9mm and 31.6mm
WEIGHT	278g
COLOR	Black



STROKE SP (CARBON)

- Full monocoque carbon with two bolts design for easy adjusted saddle position
- Low profile carbon clamp protect & reduce stress of carbon rail
- Additional alloy clamp ensures non-slip and avoid seat-clamp over-tighten or even crushing the carbon post

XC/ENDURO	
MATERIAL	Full carbon fiber
POST LENGTH	400mm
OFFSET	0mm
SIZE	30.9mm
WEIGHT	229g
COLOR	UD black



CLAMP

BOMB QR CLAMP 3.0P

- Waterproof design prevents mud and dust flow into seat tube
- The chamfered edge and offset inner bore design protects the seat post and the seat tube from fractioning
- QR level with "MATTE" and "GLOSS" surface finish

QR	
MATERIAL	AL6061-T6 with CNC Machined
SIZE	34.9mm
HEIGHT	15mm
WEIGHT	47g
COLOR	Black, Blue, Red



MARK 3

- Waterproof design prevents mud and dust flow into seat tube
- The chamfered edge and offset inner bore design protects the seat post and the seat tube from fractioning
- Single-bolt seat clamp



SINGLE-BOLT	
MATERIAL	AL6061-T6 with CNC Machined
SIZE	34.9mm
WEIGHT	27g
COLOR	Black with black or red cover



SADDLE

MOTION

- Open channel design provides not only lightweight but also the blood flow and pressure relief for longer riding.
- The wider width and a shorter nose saddle supports the sit bones and less some rubbing on inner thighs for comfort riding.
- The airfoam material with better flexible



MTB	
MATERIAL	Padding fill in by Airfoam
CR-MO RAIL	7mm
SIZE	242*145mm
WEIGHT	256g
COLOR	Black, White, Red, Yellow

SADDLE

DIRT DEVIL

- A Pressure-relax ergonomics fillister design
- More comfortable high density foam
- High frequency embossing PU cover
- Nylon fiber injection base to keep up strength
- Dual color rail process



MTB	
MATERIAL	High density foam with PU cover
CR-MO RAIL	7mm
SIZE	280*145mm
WEIGHT	290g
COLOR	Colorful, Black

ASPECT

- Low profile design giving you the realest feelings.
- High frequency embossing PU cover
- Nylon fiber injection base
- Appearance in gloss and fiber surfaces mixed



XC	
MATERIAL	High frequency embossing PU cover
CR-MO RAIL	7mm w/dual color process
WEIGHT	241g
COLOR	Black, Neon Yellow, White

DA SKULL 2.0

- Da Skull symbol
- Low profile Aero Shape
- Kevlar rear bumper for protect rear and side



MTB	
MATERIAL	PU cover
CR-MO RAIL	7mm
WEIGHT	269g
COLOR	White

BOOSTER

- Enlarged chassis raised to the rear portion
- Dual color process in Cr-moly rail
- Enlarged chassis
- Stylish bumper raised to the rear portion
- Dual color precess in Cr-moly rail



MTB	
MATERIAL	Synthetic
CR-MO RAIL	7mm
WEIGHT	250g
COLOR	Camo

PEDAL

V STAGE

- Double side for MTB Clip-in and flat
- Super Thin Type
- For Shimano CLIP system



XC/DH	
MATERIAL	AL6061-T6 with CNC machined
SIZE (PLATFORM)	100*110mm
BEARING	LSL bushing & sealed
WEIGHT	467g/pair
COLOR	Black, Blue, Red

BULLET CLIP



- Free vent design
- CNC machined extreme thin pedal
- Replaceable pins and with convenient wrench included
- Two sealed bearings and one DU

XC/DH	
MATERIAL	AL6061-T6 with CNC machined
SIZE (PLATFORM)	97*108mm
THICKNESS	10mm
WEIGHT	356g/pair
COLOR	Black, Blue, Red

VS 50



- Durable, strong and economic type
- With replaceable pins
- Painting surface treatment

XC/DH	
MATERIAL	Die-cast alloy body
AXLE	CNC machined Cr-Moly spindle
SIZE (PLATFORM)	111*108mm
THICKNESS	17mm
BEARING	Loose ball bearing
WEIGHT	450g/pair
COLOR	Black, Neon Yellow, Neon Orange

SHOOT BLOCK

- Die Casting and Extreme Thin Pedal
- Replaceable anti-slippery steel pins with a convenient wrench included



XC	
MATERIAL	AL-6061-T6 ED coating colors, PAD printing logo
SIZE (PLATFORM)	100*105mm
THICKNESS	9mm
BEARING	One sealed bearing & one DU
WEIGHT	352g/pair
COLOR	Matte Black, Raw

RECOIL CHAIN GUIDE

CGX 3 in 1

- Top chain guide for reduce dropping chain and stable the works
- The great strength firm bash guard is able to resist impacting
- Detachable lower roller for chain tensioner



- Lifting upper slider for chain adjustment



AM/ENDURO

MATERIAL	Aluminum CNC machined For 9-11 speeds
CHAINRING CAPACITY	28T-36T, ISCG-05 system
WEIGHT	118g

SCG

- Simple outlook & light weight
- Easy installation & adjustment with a single tool (4mm hex)
- No need to remove your crank when assemble or disassemble it
- Anti-drop chain
- Suitable for oval chainring



- Lifting upper slider for chain adjustment



AM/ENDURO

MATERIAL	Nylon with carbon fiber injection chain guide For 9-11 speeds
CHAINRING CAPACITY	28T-36T, ISCG-05 system
WEIGHT	28g

GSX+X-GUARD

- Compatible with narrow-wide chainring (X-RING)
- Both for BCD104

AM/ENDURO

CHAIN GUIDE	
SPEED	For 9-11 speeds
BCD	104mm
CHAINRING CAPACITY	30T-36T, ISCG-05 system
WEIGHT	47g
COLOR	Black

X-GUARD

MATERIAL	AL6061-T6 CNC machined with anodized
WEIGHT	45g



RECOIL CHAIN GUIDE

BGS

- Chaining with bashguard Type (Need to be assembled with bashguard).
- Made by CNC aluminum
- 9-11 speed

AM/DH

CHAINRING CAPACITY 32T-40T, ISCG-05 system

WEIGHT 152g

COLOR Black

THE ITEM DOES NOT INCLUDE BASHGUARD



GS-D

- Lightweight design for dual chain wheel
- Avoid from unnecessary vibration and chain offset.

AM

MATERIAL AL6061-T6 CNC machined with anodized

CHAINRING CAPACITY 22T-38T, ISCG-05 system

WEIGHT 77g

COLOR Black



JUMPING BIKE KIT

RL-X

- Single speed chain tensioner (RL-5 upgraded type), easily assemble on the derailleur hanger whether axle you're using (QR or axle)
- Frictionless, low vibration & noiseless
- Double spring chain guide design. Adjustable angle makes it a very good chain tensioner

STREET/DIRT JUMP, CHAIN TENSIONER

MATERIAL AL6061-T6 CNC machined Outline spring design

WEIGHT 121.5g

COLOR Black



RL-5

- An upgrade version from RL-4 to adopt springs
- Reflecting higher tension on chaining

STREET/DIRT JUMP, CHAIN TENSIONER

WEIGHT 86g

COLOR Black



JUMPING BIKE KIT

SCROLL

- Da Bomb "SCROLL" spacer replaces the bigger sprockets of lower gear ratio, which is designed for DH racing for max. 7 speeds
- Reduce sprocket from 10-11 speed to 7 speed for lightweight design
- CNC machined for stiffness and strengthen
- Suitable for mountain bikes and road bikes
- Compatible with SHIMANO system:

DH

MATERIAL AL6061-T6 with CNC Machined

WEIGHT 39g

COLOR Green, Blue, Red, Black



9 TO 1

STREET/DIRT JUMP

MATERIAL Alloy(2 spacer) & Cr-moly(a lock ring & 16/18T)

WEIGHT 90.5g

COLOR Black

- Converting a multi-speed bike into a single-speed DJ/Street bike. It is simply to use the original hub with Da Bomb "9 to 1" kits



- Complete assembly

RL-4

STREET/DIRT JUMP, CHAIN TENSIONER

WEIGHT 86g

COLOR Orange

- Adjustment convert a vertical drop-out frame to single speed



JUMPING BIKE KIT

X-RING

- Narrow-wide chainring
- Nut shaped in one piece for 30T sprocket design

CHAINRING

MATERIAL	AL7075-T6 CNC machining with anodized colors
TEETH	30T, 32T, 34T, 36T
BCD	104mm
WEIGHT	38g/30T, 49g/32T, 67g/34T, 85g/36T
COLOR	Green, Blue, Black



X-ORBIT

- Oval rings reduce the knees loading, especially pedaling in 180° and 270°
- Narrow wide tooth design throw out chain drop with the perfect chain mesh fit
- For all cranks with 104 BCD interface to improve traction and climbing abilities

OVAL CHAINRING

MATERIAL	AL7075-T6 with CNC Machined
BCD	104mm
TEETH	34T & 36T
WEIGHT	51g(34T) & 59g(36T)
COLOR	Black, Red, Purple



D-HANGER

- When you are facing a problem of assembling a rear derailleur on a horizontal dropout, D-HANGER would be a great assistance to solve the problem

STREET/DIRT JUMP

SIZE	10mm axle
------	-----------



HCT

- Horizontal Chain Tensioner
- For horizontal drop-out system

STREET/DIRT JUMP

WEIGHT	71.5g
--------	-------



APPAREL

DABOMB DOWNHILL JERSEY



DH

MATERIAL	100% Polyester
SIZE	F
COLOR	Grey (Red & Neon Yellow only for Team Riders)

- Breathable
- Quick dry
- Sweat wicking, soft against the skin

DABOMB TECHNICAL TEE



FREESTYLE

MATERIAL	100% polyester
SIZE	XS/S/M/L

BANNER



DA BOMB PRECISION HARDWARE BANNER

SIZE	L200cm*W50cm
COLOR	Yellow, Orange

BOMB FENDER



XC-DH

COLOR	Black, White
-------	--------------

- BOMB FENDER is a muck catcher to prevent and protect your bike from mud splashed or avoid from muddy shock problem. This portable and designed blade is extra light and thin, simple installation and un-installation between any specific occasions.

ACCESSORY

PROTECTOR RING

- The significant utility of these colorful rings is defending your bike's chain stay or Entire frame (available for road/off-road bikes) from attacks of rocks without scratches covered.

XC/DH

COLOR

Black, Red,
Neon Green, Neon Pink



BOMB BOY WATER BOTTLE

- 100% leak-proof design
- Fitting all types of bike bottle cages
- Jet valve cap is positive lockout ensures leak-free shaking

JET VALVE DESIGN

MATERIAL Polypropylene, PP with BPA-free

TRMP. -5 to 50°C

CAPACITY 750ml



SKULL VALVE

- If you want to scare the enemies on the road, having some skull valve on your wheels can give you huge power and safety.

SUITABLE FOR SCHRADER (AMERICAN) VALVES

COLOR

White



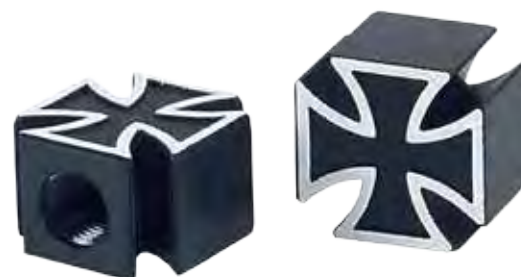
CROSS VALVE

- Da Bomb Cross Logo

SUITABLE FOR SCHRADER (AMERICAN) VALVES

COLOR

Black



GRENADE VALVE

- When you got pissed of at the race, the Grenade valve definitely will be your best choice to throw at the enemies.

**DA BOMB EXCLUSIVE GRENADE VALVE
SUITABLE FOR SCHRADER (AMERICAN) VALVES**

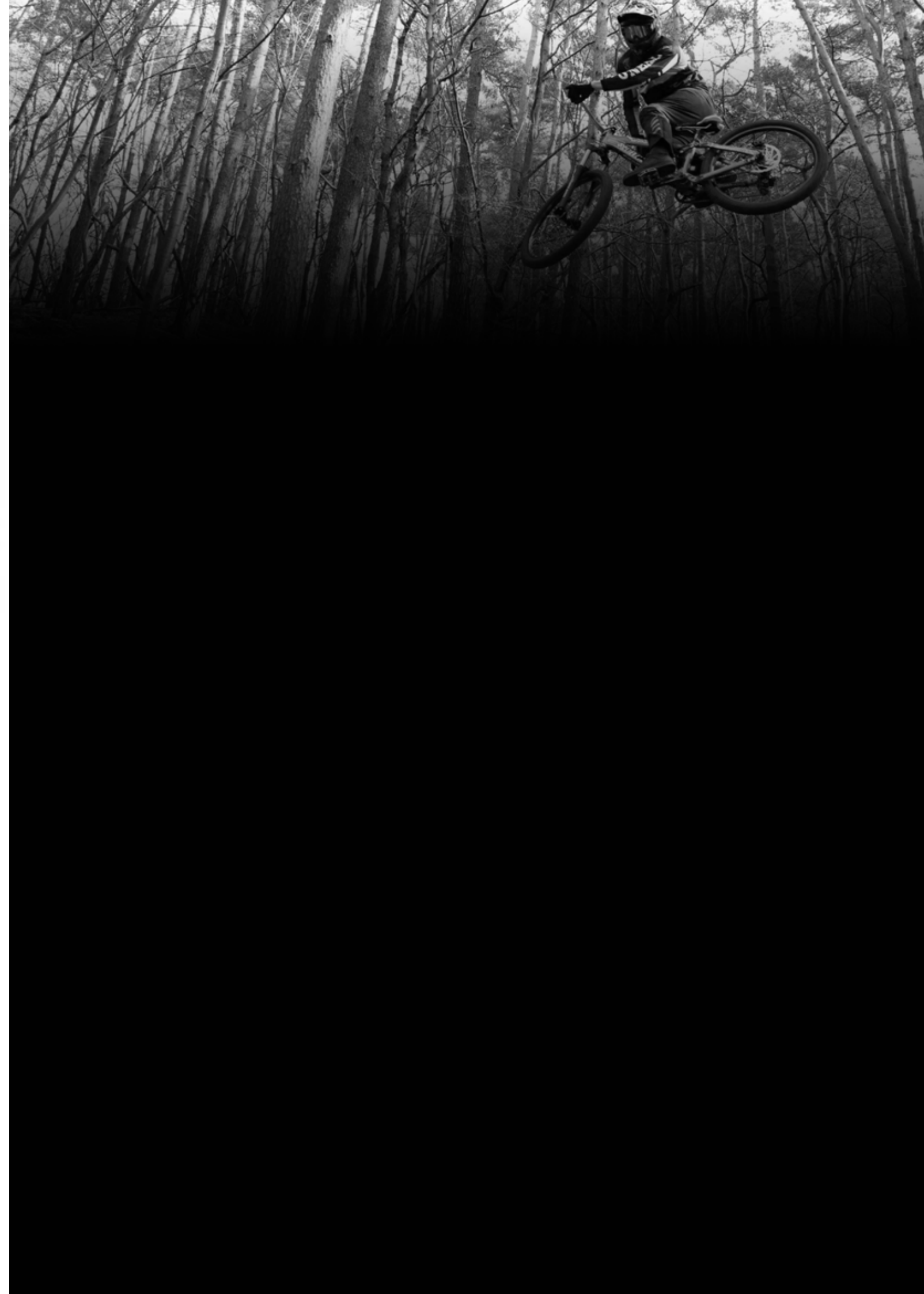
COLOR

Silver/Blue/Orange



STICKER SET

- DA BOMB sticker set, specs stickers/ pack





www.stevecramerproducts.com